

DEDON

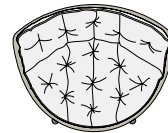
**MBRACE**

# MBRACE

## Lounge chair

Design by **Sebastian Herkner** | Item code: **085006** | Weight **7,6 kg/17 lbs** | Volume **0,25 m<sup>3</sup>/25 cu ft** | COM (Customer Own Material): **2,45 m/3.75 yd** (plain fabric only)

### Measurements



107  
42¼

35 8  
13¾ 3¼

84  
33

78  
30¾

cm  
inch

**Collection:** Taking a joyfully unconventional approach to poolside furniture, MBRACE by Sebastian Herkner brings together DEDON Fiber seating and a solid teak base to create a unique range of cosy, cocooning lounge chairs. Available in wingback, lounger and rocking chair versions, MBRACE features a mesh-like triaxial weave and comes with optional cushion sets to suit any taste.

**Lounge chair:** This low-back lounger features a triaxial open-weave seat, a solid-teak base and a choice of comfortable seat cushions.

**Frame:** The frame consists of aluminum. The base consists of premium teak.

**Finishing:** The frame is electrostatic powder-coated in a color similar to that of the fiber. The base consists of natural-finish teak.

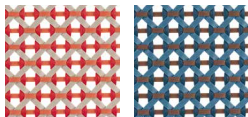
**Characteristics:** Friendly, engaging, embracing, innovative, exceptionally comfortable

**Options:** This item is available with a cushion or a seat cushion.

**Frame Maintenance:** Clean with a soft cloth and warm water. Wash the bases with warm water in which natural soap flakes have been dissolved.

**Cushion Maintenance:** While the covers cannot be removed, the complete cushions may be washed by hand.

### Fiber Standard



112  
spice

114  
atlantic



115  
pepper

### Additional Items



Cover

### Fabrics

Cushion: **95085006**  
Seat cushion: **95085016**

Please see Fabric Options Fact Sheet

### Award



Interior Innovation  
„Best of Best“

To learn more about DEDON, our collections and warranty policy, please visit our website –

[www.dedon.de](http://www.dedon.de)

0115

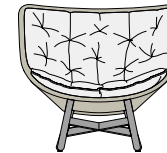
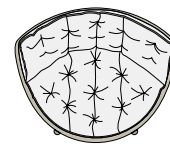
DEDON

# MBRACE

## Wing chair

Design by **Sebastian Herkner** | Item code: **085004** | Weight **8,6 kg/19 lbs** | Volume **0,92 m³/33 cu ft** | COM (Customer Own Material): **3,80 m/4.00 yd** (plain fabric only)

### Measurements



107  
42¼

95 8  
13¾ 3¼

89  
35

97  
38¼

cm  
inch

**Collection:** Taking a joyfully unconventional approach to poolside furniture, MBRACE by Sebastian Herkner brings together DEDON Fiber seating and a solid teak base to create a unique range of cosy, cocooning lounge chairs. Available in wingback, lounger and rocking chair versions, MBRACE features a mesh-like triaxial weave and comes with optional cushion sets to suit any taste.

**Wing chair:** This wing-back lounger features a triaxial open-weave seat, a solid-teak base and a choice of comfortable seat cushions.

**Frame:** The frame consists of aluminum. The base consists of premium teak.

**Finishing:** The frame is electrostatic powder-coated in a color similar to that of the fiber. The base consists of natural-finish teak.

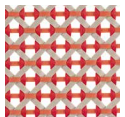
**Characteristics:** Friendly, engaging, embracing, innovative, exceptionally comfortable

**Options:** This item is available with a cushion or a seat cushion.

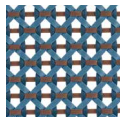
**Frame Maintenance:** Clean with a soft cloth and warm water. Wash the bases with warm water in which natural soap flakes have been dissolved.

**Cushion Maintenance:** While the covers cannot be removed, the complete cushions may be washed by hand.

### Fiber Standard



112  
spice



114  
atlantic



115  
pepper

### Additional Items



Cover

### Fabrics

Cushion: **95085004**  
Seat cushion: **95085016**

Please see Fabric Options Fact Sheet

### Award



Interior Innovation  
„Best of Best“

To learn more about DEDON, our collections and warranty policy, please visit our website –

[www.dedon.de](http://www.dedon.de)

0115

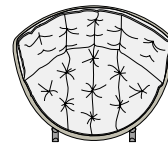
DEDON

# MBRACE

Rocking chair

Design by **Sebastian Herkner** | Item code: **085008** | Weight **9,9 kg/22 lbs** | Volume **1,01 m<sup>3</sup>/36 cu ft** | COM (Customer Own Material): **3,80 m/4.00 yd** (plain fabric only)

## Measurements



107  
42¼

35 8  
13¾ 3¼

89  
35

97  
38¼

cm  
inch

**Collection:** Taking a joyfully unconventional approach to poolside furniture, MBRACE by Sebastian Herkner brings together DEDON Fiber seating and a solid teak base to create a unique range of cosy, cocooning lounge chairs. Available in wingback, lounger and rocking chair versions, MBRACE features a mesh-like triaxial weave and comes with optional cushion sets to suit any taste.

**Rocking chair:** This wing-back rocking chair features a triaxial open-weave seat, a solid-teak base and a choice of comfortable seat cushions.

**Frame:** The frame consists of aluminum. The base consists of premium teak.

**Finishing:** The frame is electrostatic powder-coated in a color similar to that of the fiber. The base consists of natural-finish teak.

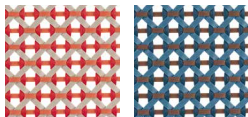
**Characteristics:** Friendly, engaging, embracing, innovative, exceptionally comfortable

**Options:** This item is available with a cushion or a seat cushion.

**Frame Maintenance:** Clean with a soft cloth and warm water. Wash the bases with warm water in which natural soap flakes have been dissolved.

**Cushion Maintenance:** While the covers cannot be removed, the complete cushions may be washed by hand.

## Fiber Standard



112  
spice

114  
atlantic



115  
pepper

## Additional Items



Cover

## Fabrics

Cushion: **95085004**  
Seat cushion: **95085016**

Please see Fabric Options Fact Sheet

## Award



Interior Innovation  
„Best of Best“

To learn more about DEDON, our collections and warranty policy, please visit our website –

[www.dedon.de](http://www.dedon.de)

0115

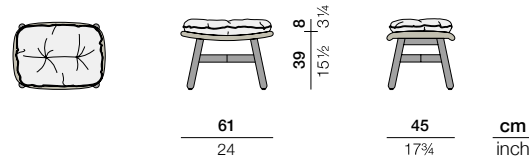
DEDON

# MBRACE

## Footstool

Design by **Sebastian Herkner** | Item code: **085032** | Weight **2,6 kg/6 lbs** | Volume **0,11 m<sup>3</sup>/4 cu ft** | COM (Customer Own Material): **0,75 m/1.50 yd** (plain fabric only)

### Measurements



**Collection:** Taking a joyfully unconventional approach to poolside furniture, MBRACE by Sebastian Herkner brings together DEDON Fiber seating and a solid teak base to create a unique range of cosy, cocooning lounge chairs. Available in wingback, lounge and rocking chair versions, MBRACE features a mesh-like triaxial weave and comes with optional cushion sets to suit any taste.

**Footstool:** Featuring a triaxial open-weave top and a solid-teak base, the MBRACE footstool goes perfectly with all three chairs in the collection.

**Frame:** The frame consists of aluminum. The base consists of premium teak.

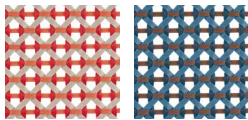
**Finishing:** The frame is electrostatic powder-coated in a color similar to that of the fiber. The base consists of natural-finish teak.

**Characteristics:** Friendly, engaging, embracing, innovative, exceptionally comfortable

**Frame Maintenance:** Clean with a soft cloth and warm water. Wash the bases with warm water in which natural soap flakes have been dissolved.

**Cushion Maintenance:** While the covers cannot be removed, the complete cushions may be washed by hand.

### Fiber Standard



112  
spice

114  
atlantic



115  
pepper

### Additional Items



Cover

### Fabrics

Item code: **95085032**

Please see Fabric Options Fact Sheet

### Award



Interior Innovation  
„Best of Best“

To learn more about DEDON, our collections and warranty policy, please visit our website –

[www.dedon.de](http://www.dedon.de)

0116

**DEDON**