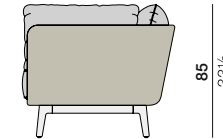
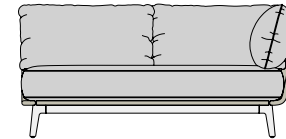
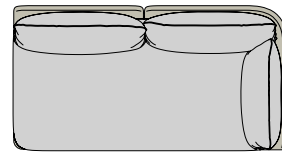


MBARQ

Left corner module

Design by Sebastian Herkner | Item code: 109006 | Weight 23 kg/51 lbs | Volume 1,38 m³/49 cu ft

Measurements



187
73½

25 - 20
9% | 7%

101
39¾

85
33½
cm
inch

Collection: With its expansive backrests and deep seating, MBARQ by Sebastian Herkner envelopes users in privacy and protective comfort. Inspired by the traditional form of the indoor alcove, the modular collection gives structure to open outdoor spaces, defining areas in which to work, rest or engage in conversation.

Characteristics: Comfortable. Cosy. Enveloping. Intimate. Protective. Poetic.

Left corner module: With an understated organic form typical of the collection, the left corner module is available in three colors of powder-coating and three fiber colors. It features an additional back cushion for even greater comfort, as well as optional Dry+ cushion construction.

Frame: The frame consists of aluminum.

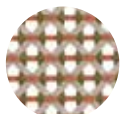
Finishing: The frame is electrostatic powder-coated in a color suitable to that of the fiber.

Frame maintenance: Clean with a soft cloth and warm water.

Cushion maintenance: Every cushion is removable and all cushion covers are washable at 30°C.

Options: Optional Dry+ cushion construction is available for MBARQ.

Fibers and powder coatings



151
chestnut

+



084
terracotta

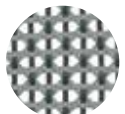


115
pepper

+



304
lipari



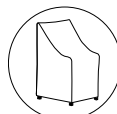
141
baltic

+



133
nori

Additional items



Cover

56109006000

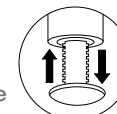
Cushions

Dry+ cushion set: 95109204 + fabric code

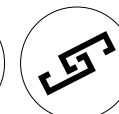
Dry+ additional back cushion: 3x 95109290 + fabric code

Please see fabric options fact sheet

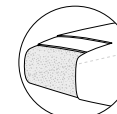
Features



Adjustable



Connector



Dry+ cushion

To learn more about DEDON, our collections and warranty policy, please visit our website –

www.dedon.de

10/20

DEDON