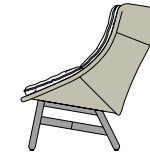
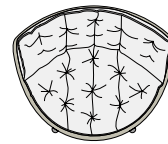


MBRACE

Wing chair

Design by **Sebastian Herkner** | Item code: **085004** | Weight **8,6 kg/19 lbs** | Volume **0,92 m³/33 cu ft** | COM (Customer Own Material): **1,80 m/2.25 yd** (plain fabric only)

Measurements



107
42¼

95 8
13¾ 5¼

89
35

97
38¼
cm
inch

Collection: MBRACE by Sebastian Herkner takes a joyfully unconventional approach to poolside furniture, bringing DEDON fiber seating and a solid teak base together for the very first time. The result is an eye-catching, instantly likable collection for lounging, dining and more. MBRACE captures the spirit of barefoot luxury while extending the DEDON design language into new, more Nordic territory.

Characteristics: Friendly, engaging, embracing, innovative, exceptionally comfortable

Wing chair: This wing-back lounge features a triaxial open-weave seat, a solid-teak base and a choice of comfortable cushions.

Frame: The frame consists of aluminum. The base consists of premium teak.

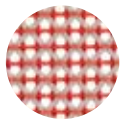
Finishing: The frame is electrostatic powder-coated in a color similar to that of the fiber. The base consists of natural-finish teak.

Frame maintenance: Clean with a soft cloth and warm water. Wash the teak base using DEDON teak cleaner. To retain the golden-brown color of unweathered teak, we recommend applying DEDON teak oil at least once in every six months.

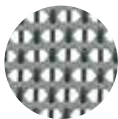
Cushion maintenance: While the covers cannot be removed, the complete cushions may be washed by hand at 30 °C / 86 °F.

Options: This item is also available with a headrest cushion.

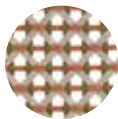
Fibers



112
spice



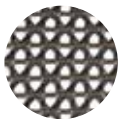
141
baltic



151
chestnut



115
pepper

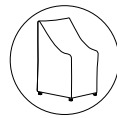


126
arabica



140
sea salt

Additional items



Cover

56085004000

Cushions

Cushion: **95085004 + fabric code**

Seat cushion: **95085016 + fabric code**

Headrest cushion: **95085005 + fabric code**

Please see fabric options fact sheet

To learn more about DEDON, our collections and warranty policy, please visit our website –

www.dedon.de