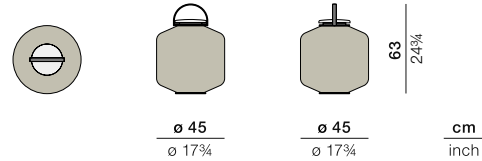


# THE OTHERS

## Lantern hanging M

Design by **Stephen Burks** | Item code: **093050 (230V) / 093055 (120V)** | Weight **3,6 kg/8 lbs** | Volume **0,12 m³/5 cu ft**

### Measurements



**Collection:** Meet THE OTHERS, an anthropomorphic lantern collection that ventures into decorative art. Playful, colorful, sculptural and sophisticated, THE OTHERS consists of a variety of hand-woven lanterns that, presented individually or arranged in totem-like stacks, take on the appearance of illuminated characters. Pairs of hand-made acrylic eyes, available as accessories, gaze back at the viewer with humor, curiosity and even a little mischief.

**Lantern hanging M:** Available in cloud or terra, this medium woven lantern features a handle for carrying or hanging, and an innovative LED outdoor lighting system, rechargeable by solar panels or cable.

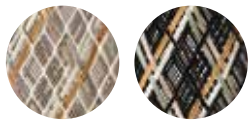
**Frame:** The frame consist of aluminum. The frame consist of aluminum. The spacer consists of premium teak.

**Finishing:** The frame is electrostatic powder-coated. The spacer consists of natural finished teak.

**Options:** Optional set of eyes. Handmade acrylic mosaic: Clean with a soft cloth and warm water.

**Frame maintenance:** Clean with a soft cloth and warm water.

### Fiber Standard



128  
cloud

129  
terra

### Optional Eyes



093092001

093092002



093092003

### Energy efficiency

Energy efficiency eec A+. These luminaires contain built-in LED lamps. The lamps cannot be changed in the luminaires.

### Certificates

CE, FCC, PSE, SAA, ETL

### IP64

This lighting object is a decorative element for outdoor and indoor use and features a warm white correlated color temperature (2700 Kelvin). It has an ingress protection marking for LED Module by IP64, which means it is dustproof, splash proof and therefore fully suitable for outdoor use.

To learn more about DEDON, our collections and warranty policy, please visit our website –

[www.dedon.de](http://www.dedon.de)

10/20

**DEDON**