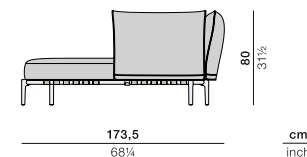
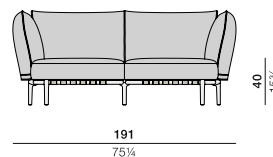
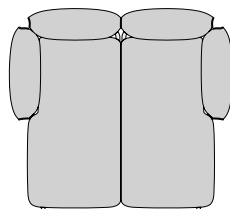


# BREA

Double daybed

Design by Edward Barber & Jay Osgerby | Item code: 107043 | COM (Customer Own Material): 12 m / 13 1/8 yd (plain fabric only)

## Measurements



**Collection:** With BREA, Edward Barber and Jay Osgerby have conceived an outdoor lounge system of quiet luxury and superior quality. Sophisticated and refined construction, together with an ingenious system of connectors, give the collection a modern profile and maximum versatility.

**Double daybed:** The double daybed is characterized by its luxurious size and comfort. Available in three colors of powder-coating and all DEDON fabrics, it features a modern design and easy-to-remove cushions.

**Frame:** BREA consists of a powder-coated metal frame, universal die-cast aluminum legs and connectors and elastic outdoor belting in Sunbrella® yarns for enhanced comfort.

**Characteristics:** Gorgeous, clever, luxurious comfort, elegant simplicity, indoor luxury outdoors

**Cushion maintenance:** BREA cushions can be easily slipped on and off of the metal frame. All cushion covers can be removed and washed.

**Frame maintenance:** Clean with a soft cloth and warm water.

**Options:** BREA cushions are available in Cat. A, Cat. B (incl. Kvadrat PATIO) and Cat. C fabrics. Exclusively for BREA, cushions and deco cushions are available in SAIL CLOTH light gray fabric.

## Powder coating



000  
white

317  
black pepper



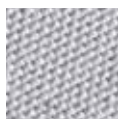
330  
palm

## Cushion

Cushion set:  
95107043

Recommended deco-cushion:  
2x 25 x 62 cm / 9 3/4 x 24 1/2"  
95050090

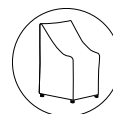
## Fabrics



693  
SAIL CLOTH  
light gray fabric for  
BREA collection and  
deco cushions only.

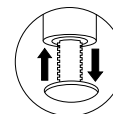
Please see fabric options fact sheet

## Additional items



Cover

## Features



Furniture

## Award



Interior Innovation  
„Best of Best“

To learn more about DEDON, our collections and warranty policy, please visit our website –

[www.dedon.de](http://www.dedon.de)

12/18

# DEDON