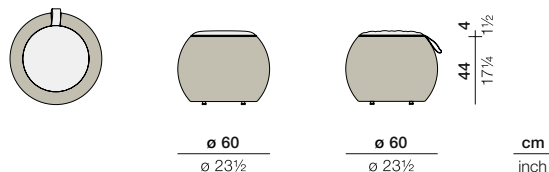


DALA

Stool / Side table

Design by **Stephen Burks** | Item code: **073035** | Weight **4,5 kg/10 lbs** | Volume **0,16 m³/6 cu ft** | COM (Customer Own Material): **/2.00 yd** (plain fabric only)

Measurements



Collection: DALA takes inspiration from the artisanship and improvised seating arrangements of the developing world. Surface and structure merge in this versatile collection by Stephen Burks, each piece starting as a powder-coated frame of aluminum mesh through which DEDON's master weavers thread colorful strands of our revolutionary new ecological fiber.

Stool/Side table: Lightweight and easy to move around, this comfortable, high DALA stool is great for casual seating. With its color-coordinated glass top, it can also be used as a side table.

Frame: Aluminum

Finishing: Frame is electrostatic powder-coated. Fiber is High-Density Polyethylene (HDPE). Tabletop is lacquered glass with satinated stripes.

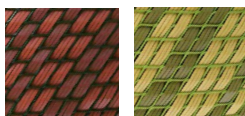
Characteristics: Colorful, distinctive, innovative, versatile, practical, ecological

Options: This item may be either used as side table (when glass top is applied) or stool (when cushion is applied).

Frame Maintenance: Clean with soft cloth and warm water. Contact with chlorinated pool water should be avoided. Areas splashed with chlorinated water should be cleaned with ordinary water.

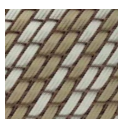
Cushion Maintenance: All cushion covers can be removed and washed.

Colors



532
fire

533
grass



534
stone

Additional Items



Cover

Fabrics

fire: **95073033735**

grass: **95073033761**

stone: **95073033762**

Please see Fabric Options Fact Sheet

Tabletop

Glass fire
22273033313

Glass grass
22273033312

Glass stone
22273033314

To learn more about DEDON, our collections and warranty policy, please visit our website –

www.dedon.de

0116

DEDON