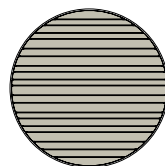


# LOU

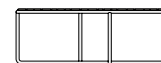
Coffee table ø102 cm

Design by **Toan Nguyen** | Item code: **079034** | Weight **15,3 kg/34 lbs** | Volume: **0,38 m³/14 cu ft**

## Measurements



ø102  
ø40 ¼



ø102  
ø40 ¼

37  
14 ½

cm  
inch



**Collection:** Combining traditional DEDON craftsmanship with innovations in cushions, weave and material mix, the LOU modular system by Toan Nguyen takes outdoor lounging to a new level. Perfect for settings large or small, with a range of accessories wide enough to create a total atmosphere, LOU features a curved module that brings a special twist to the otherwise rectilinear design.

**Coffee table:** This circular coffee table is designed to overlap with the square LOU coffee table, contributing to the 'total look' concept of the collection.

**Frame:** The tabletop consists of premium teak. The base consists of powder-coated stainless steel.

**Finishing:** Electrostatic powder-coating and natural-finish teak

**Characteristics:** Contemporary, low-seating, convenient, comfortable

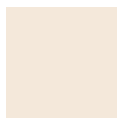
**Frame Maintenance:** Clean with a soft cloth and warm water. Natural-finish teak: Wash the teak using warm water and a soft sponge.

## Color tabletop



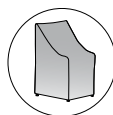
**205**  
teak

## Color frame



**098**  
lipari

## Additional Items



Cover

To learn more about DEDON, our collections and warranty policy, please visit our website –

[www.dedon.de](http://www.dedon.de)

0116

**DEDON**