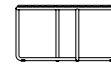
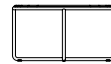
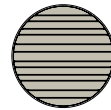


LOU

Coffee table ø68 cm

Design by **Toan Nguyen** | Item code: **079036** | Weight **8,2 kg/18 lbs** | Volume: **0,17 m³/6 cu ft**

Measurements



37
14 1/2

ø68
ø26 3/4

ø68
ø26 3/4

cm
inch

Collection: Combining traditional DEDON craftsmanship with innovations in cushions, weave and material mix, the LOU modular system by Toan Nguyen takes outdoor lounging to a new level. Perfect for settings large or small, with a range of accessories wide enough to create a total atmosphere, LOU features a curved module that brings a special twist to the otherwise rectilinear design.

Coffee table: This circular coffee table is designed to overlap with the square LOU coffee table, contributing to the 'total look' concept of the collection.

Frame: The tabletop consists of premium teak. The base consists of powder-coated stainless steel.

Finishing: Electrostatic powder-coating and natural-finish teak

Characteristics: Contemporary, low-seating, convenient, comfortable

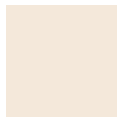
Frame Maintenance: Clean with a soft cloth and warm water. Natural-finish teak: Wash the teak using warm water and a soft sponge.

Color tabletop



205
teak

Color frame



098
lipari

Additional Items



Cover

To learn more about DEDON, our collections and warranty policy, please visit our website –

www.dedon.de

0116

DEDON