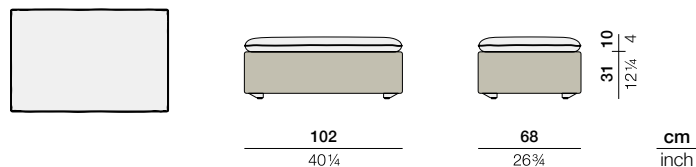


LOU

Footstool / Coffee table

Design by **Toan Nguyen** | Item code: **079032** | Weight **7 kg/16 lbs** | Volume **0,22 m³/8 cu ft** | COM (Customer Own Material): **2,25 m/3.00 yd** (plain fabric only)

Measurements



Collection: Combining traditional DEDON craftsmanship with innovations in cushions, weave and material mix, the LOU modular system by Toan Nguyen takes outdoor lounging to a new level. Perfect for settings large or small, with a range of accessories wide enough to create a total atmosphere, LOU features a curved module that brings a special twist to the otherwise rectilinear design.

Footstool/Coffee table: The extra-thin yet extremely comfortable reversible cushion on this LOU footstool can be replaced with a high-impact ceramic top to create a coffee table.

Frame: Aluminum

Finishing: Electrostatic powder-coated in a color similar to that of the fiber

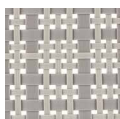
Characteristics: Contemporary, low-seating, convenient, comfortable, luxuriously woven

Options: This item may be used as a coffee table when the cushion is removed and replaced with a tabletop.

Frame Maintenance: Clean with a soft cloth and warm water.

Cushion Maintenance: All cushion covers can be removed and washed.

Fiber Standard



107
clay

Additional Items

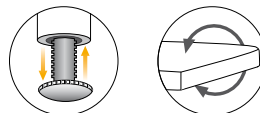


Incl. „Connector“ piece
for secure connection of
individual sections



Cover

Special Features



- The furniture is fitted with sliding mechanisms for height adjustment.
- The seat cushion on this item may be flipped.

Fabrics

Item code: **95079032**

Please see Fabric Options Fact Sheet

Tabletop



Item code: **23379033308**

To learn more about DEDON, our collections and warranty policy, please visit our website –

www.dedon.de

0116

DEDON