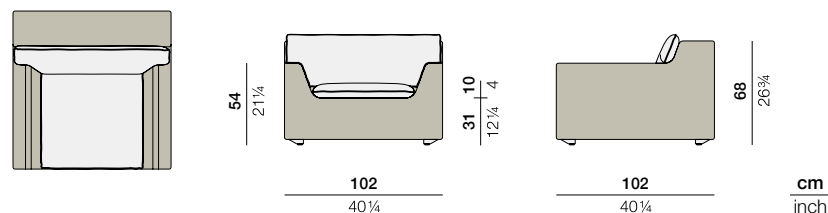


# LOU

## Lounge chair

Design by **Toan Nguyen** | Item code: **079005** | Weight **16 kg/36 lbs** | Volume **0,71 m³/26 cu ft** | COM (Customer Own Material): **2,06 m/3.00 yd** (plain fabric only)

### Measurements



**Collection:** Combining traditional DEDON craftsmanship with innovations in cushions, weave and material mix, the LOU modular system by Toan Nguyen takes outdoor lounging to a new level. Perfect for settings large or small, with a range of accessories wide enough to create a total atmosphere, LOU features a curved module that brings a special twist to the otherwise rectilinear design.

**Lounge chair:** With its extra-thin yet extremely comfortable reversible cushions, this contemporary lounge chair is the perfect complement to the LOU modular lounge system.

**Frame:** Aluminum

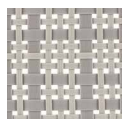
**Finishing:** Electrostatic powder-coated in a color similar to that of the fiber

**Characteristics:** Contemporary, low-seating, convenient, comfortable, luxuriously woven

**Frame Maintenance:** Clean with a soft cloth and warm water.

**Cushion Maintenance:** All cushion covers can be removed and washed.

### Fiber Standard



**107**  
clay

### Additional Items

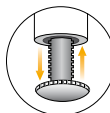


Incl. „Connector“ piece  
for secure connection of  
individual sections



Cover

### Special Features



- The furniture is fitted with sliding mechanisms for height adjustment.
- The seat cushion on this item may be flipped.

### Fabrics

Item code: **95079005**

Please see Fabric Options Fact Sheet

To learn more about DEDON, our collections and warranty policy, please visit our website –

[www.dedon.de](http://www.dedon.de)

0116

**DEDON**