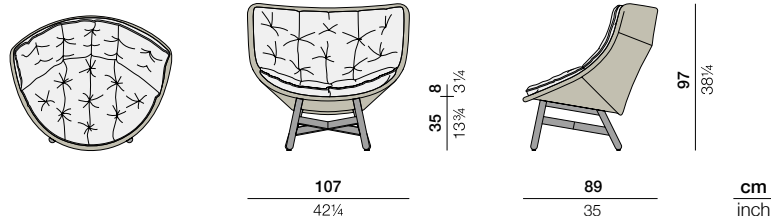


MBRACE

Wing chair

Design by **Sebastian Herkner** | Item code: **085004** | Weight **8,6 kg/19 lbs** | Volume **0,92 m³/33 cu ft** | COM (Customer Own Material): **3,80 m/4.00 yd** (plain fabric only)

Measurements



Collection: MBRACE by Sebastian Herkner takes a joyfully unconventional approach to poolside furniture, bringing DEDON fiber seating and a solid teak base together for the very first time. The result is an eye-catching, instantly likable collection for lounging, dining and more. MBRACE captures the spirit of barefoot luxury while extending the DEDON design language into new, more Nordic territory.

Wing chair: This wing-back lounge features a triaxial open-weave seat, a solid-teak base and a choice of comfortable seat cushions.

Frame: The frame consists of aluminum. The base consists of premium teak.

Finishing: The frame is electrostatic powder-coated in a color similar to that of the fiber. The base consists of natural-finish teak.

Characteristics: Friendly, engaging, embracing, innovative, exceptionally comfortable

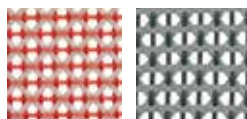
Options: This item is available with a cushion or a seat cushion, and - for contract sales only - with an aluminum base.

Frame maintenance: Clean with a soft cloth and warm water.

Wash the bases with warm water in which natural soap flakes have been dissolved.

Cushion maintenance: While the covers cannot be removed, the complete cushions may be washed by hand.

Fiber standard



112
spice

141
baltic



115
pepper

126
arabica

Additional items



Cover

Cushion

Cushion: **95085004**
Seat cushion: **95085016**

Please see fabric options fact sheet

Award



Interior Innovation
„Best of Best“

To learn more about DEDON, our collections and warranty policy, please visit our website –

www.dedon.de

0117

DEDON