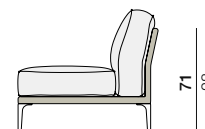
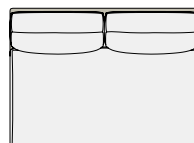


RAYN

Center module

Design by **Philippe Starck** | Item code: **078007** | Weight **17 kg/38 lbs** | Volume **0,83 m³/29 cu ft** | COM (Customer Own Material): **5,45 m/7.00 yd** (plain fabric only)

Measurements



126
49½

25
9¾

17
6¾

93
36½

71
28

cm
inch

Collection: Designed by Philippe Starck, RAYN is a modular system of remarkable breadth and versatility, combining the comfort and sophistication of the world's finest indoor systems with all of the outdoor knowhow and barefoot luxury one expects from DEDON. RAYN features luxuriously comfortable cushions developed in Italy.

Center module: This RAYN center module can help to create the perfect sectional sofa. It has a fiber weave and comes with luxuriously comfortable top-quality cushions.

Frame: Aluminum

Finishing: Electrostatic powder-coated in a color similar to that of the fiber

Characteristics: Elegant, distinctive, spacious, luxurious, modular, versatile

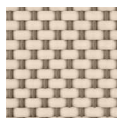
Frame maintenance: Clean with a soft cloth and warm water.

Cushion maintenance: All cushion covers can be removed and washed.

Fiber Standard



079
veneto

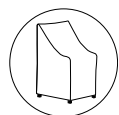


085
salina

Additional Items

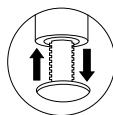


Incl. „Connector“ piece
for secure connection of
individual sections



Cover

Special Features



The furniture is fitted with
sliding mechanisms for height
adjustment.

Fabrics

Item code: **95078007**

Please see fabric options fact sheet

To learn more about DEDON, our collections and warranty policy, please visit our website –

www.dedon.de

0117

DEDON